



# IRROMETER®

SOIL WATER MANAGEMENT SINCE 1951

**75** YEARS  
OF TRUSTED  
MEASUREMENTS  
**2026 CATALOG**

## IRROMETER SOIL MOISTURE SENSORS

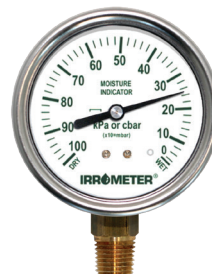
**IRROMETER®** instruments measure soil water tension to determine plant water availability. The SR (Standard) handles most soil types with a 0-100 cb (kPa) range, while the LT (Low Tension) is specialized for coarse soils and container media with enhanced precision in the 0-40 cb (kPa) range.

Both SR and LT gauges are designed with a membrane vent to ensure accuracy across temperature and elevation variations, an oversized 2½-inch face for enhanced readability, and a durable stainless steel construction that resists corrosion.



**SR**

**STANDARD**



**LOW TENSION**

**LT**

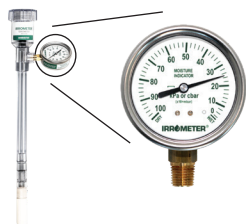


**MLT**

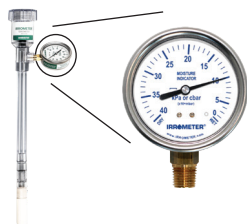
**MINIATURE LOW TENSION IRROMETER®**

A compact version of the LT, designed for small container and nursery applications.

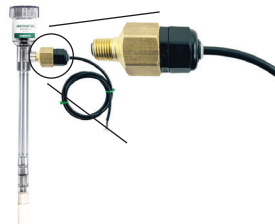
### STANDARD GAUGE



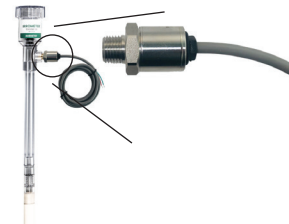
### LOW TENSION GAUGE



### VOLTAGE OUTPUT



### CURRENT OUTPUT



DEPTH	CAT #
6" (15 cm)	206
12" (30 cm)	212
18" (45 cm)	218
24" (60 cm)	224
36" (90 cm)	236
48" (120 cm)	248

**SR (STANDARD)** for use in most soil types with a 0-100 cb (kPa) range.

LT DEPTH	CAT #
6" (15 cm)	506
12" (30 cm)	512
18" (45 cm)	518
24" (60 cm)	524
MLT	CAT #
MINI	MLT

**LT (LOW TENSION)** for use in coarse soils and container media with enhanced precision in the 0-40 cb (kPa) range.

DEPTH	CATALOG #
6" (15 cm)	206-RSU-V
12" (30 cm)	212-RSU-V
18" (45 cm)	218-RSU-V
24" (60 cm)	224-RSU-V
36" (90 cm)	236-RSU-V
48" (120 cm)	248-RSU-V
MLT	CATALOG #
MINI	MLT-RSU-V

**RSU-V REMOTE SENSING UNITS** provides soil moisture levels by converting the reading to a voltage signal. A PRO SERVICE KIT (#1002) is recommended for RSU models.

DEPTH	CATALOG #
6" (15 cm)	206-RSU-C
12" (30 cm)	212-RSU-C
18" (45 cm)	218-RSU-C
24" (60 cm)	224-RSU-C
36" (90 cm)	236-RSU-C
48" (120 cm)	248-RSU-C
MLT	CATALOG #
MINI	MLT-RSU-C

**RSU-C REMOTE SENSING UNITS** provides soil moisture levels by converting the reading to a current signal. A PRO SERVICE KIT (#1002) is recommended for RSU models.

A Service Kit is required for proper IRROMETER® operation and should be included with any initial order

## SERVICE KITS



Catalog #1000 .....  
**Includes:** Syringe Pump, Irrometer Fluid, Chart Forms, Reference Book, and Canvas Bag (MLT compatible).



Catalog #1001 .....  
**Includes:** Standard Pump, Irrometer Fluid, Chart Forms, Reference Book and Canvas Bag.



Catalog #1002 .....  
**Includes:** Pump with Gauge, Irrometer Fluid, Chart Forms, Reference Book and Canvas Bag.

A **Service Kit** is used during initial installation and then periodically for removal of air from instrument to ensure maximum sensitivity and accuracy. The **Pro Service Kit** serves the dual purpose of removing air and testing the gauge in one operation.

*For Spanish instructions, add -SP to Catalog #*

## IRROMETER ACCESSORIES

CAT #	ITEM
1003	Test Pump Adapter.....
1004	IRROMETER Fluid (0.7 oz. concentrate)....
1004-L	IRROMETER Fluid (6 oz. concentrate)

### IRROMETER® Vacuum Gauges

1008†	SR Gauge only (0-100 cb[kPa]).....
1008-LT†	LT Gauge only (0-40 cb[kPa]) .....
1008-MLT†	MLT Gauge only (0-40 cb[kPa]) .....

CAT #	ITEM
<b>OUTPUT OPTIONS</b>	
AVS	Auto Vacuum Switch..... Adjustable centibar value
RSU-C†	Remote Sensing Unit..... 4-20 mA Current Output - (1/4 NPT)
RSU-V	Remote Sensing Unit..... Voltage Output - (1/4 NPT) with 10 ft cable

CAT #	ITEM
<b>REPLACEMENT TIPS &amp; COMPONENTS</b>	
SRT	SR Replacement Tip .....
MLT-TIP	MLT Replacement Tip .....
CAP	IRROMETER Cap and Stopper Assembly .....
STOP	Stoppers.....
SR-O	O-Ring (SR/LT) .....

## SOIL SOLUTION ACCESS TUBES

**SSAT** – For easy extraction of soil solution samples when testing salinity levels or plant nutrients in soil water. Includes vinyl suction line with rubber stopper seal and stopcock closure. Requires a vacuum source. (accessories below)

<b>STANDARD TENSION</b>			<b>LOW TENSION</b>		
Single Line		Double Line	Single Line		Double Line
LENGTH	CAT #	CAT #	LENGTH	CAT #	CAT #
6" (15 cm)	A6C.....	A6C-DBL.....	6" (15 cm)	A6C-LT.....	A6C-LT-DBL.....
12" (30 cm)	A12C.....	A12C-DBL.....	12" (30 cm)	A12C-LT.....	A12C-LT-DBL.....
18" (45 cm)	A18C.....	A18C-DBL.....	18" (45 cm)	A18C-LT.....	A18C-LT-DBL.....
24" (60 cm)	A24C.....	A24C-DBL.....	24" (60 cm)	A24C-LT.....	A24C-LT-DBL.....
36" (90 cm)	A36C.....	A36C-DBL.....	36" (90 cm)	A36C-LT.....	A36C-LT-DBL.....
48" (120 cm)		A48C-DBL.....	48" (120 cm)		A48C-LT-DBL.....

## SOIL SOLUTION ACCESS TUBE ACCESSORIES

CAT #	ITEM
SLA	Suction Line Assembly (to 24") ..... <b>For longer length, Add per ft (30cm)</b>
SLT	Bulk Vinyl Suction Line Tubing ...
SGL-STOP	Single Hole Stopper..... <b>per doz.</b>
DBL-STOP	Double Hole Stopper..... <b>per doz.</b>

**1002-SSAT Vacuum Pump**– Stopcock valve connection. Pump is required to create a sufficient vacuum.  
 SSAT Vacuum Pump .....

Cat #1002-SSAT



**DS-50CC Extraction Syringe** is used to extract soil solution from SSAT Tube and can be used to create a partial vacuum on shorter tubes [12" (30 cm) or less]. Extraction Syringe . . . . .

DC-50CC†



# WATERMARK SOIL MOISTURE SENSOR

## 200SS WATERMARK SENSORS

CAT #	DESCRIPTION
200SS-5	5' (1.5 m) .....
200SS-5-S	5' (1.5 m) spigot end .....
200SS-15	15' (4.5 m) .....
200SS-15-S	15' (4.5 m) spigot end .....

*For lengths longer than 15'—Add per foot.  
(minimum quantity applies)*

## 200SS WATERMARK SENSOR ACCESSORIES

CAT #	DESCRIPTION
200SS-VA3	3 Sensor Voltage Adapter .....
200SS-SDI	3 Sensor SDI Adapter .....
VTC	Vinyl Caps for pipe assembly (bag of 100) .....



The **WATERMARK Soil Moisture Sensor** is an affordable and no maintenance alternative to tensiometers that can be used with any crop type and most soils.

It can be read by compatible devices manufactured by IRROMETER and many others. Adapters to output sensor readings in 0-3v or SDI-12 are available. Reads in a 0-200 centibar (cb)/(kPa) range.

# WATERMARK METER

Handheld meter for reading 200SS WATERMARK sensors, adjustable for soil temperature variations. Features a touchpad with LCD display, durable case, 9V battery, and replaceable cable assembly.



CAT #	DESCRIPTION
30-KTCD-NL	WATERMARK Meter .....
30-KTCD-NL-SP	WATERMARK Meter .....
	w / Spanish label and instructions
30-KTCD-Cable+	Replacement Cable .....

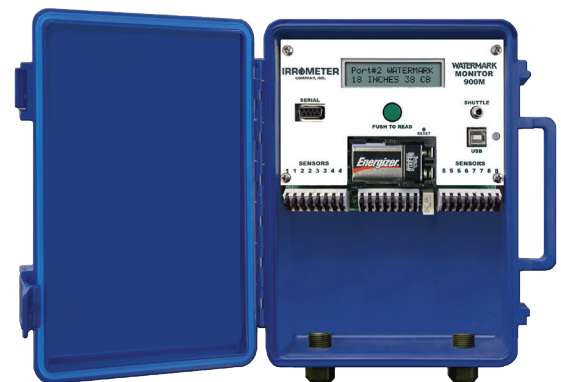
# WATERMARK MONITOR

## 900M MONITOR PACKAGES

CAT #	DESCRIPTION
900M-O	Monitor Only (without sensors) .....
900M	WATERMARK Monitor with 7 WATERMARK Sensors and 1 Soil Temperature Sensor .....
900M-8	WATERMARK Monitor with 8 WATERMARK Sensors....

## 900M ACCESSORIES

CAT #	DESCRIPTION
900M-RSU-V	RSU Voltage Wiring Board (One per 8 RSUs) .....
200TS	Soil Temperature Sensor with 15' (4.5 m) wire lead .....
ATS	Air Temperature Station with 36 in. (91 cm) wire lead .....
PPS-5+	Preset Pressure Switch - 5psi .....
900RG	Rain Gauge .....



The **900M Monitor** is a battery-powered data logger that automatically reads up to eight WATERMARK soil moisture, soil/air temperature, switch closure, rain gauge, and IRROMETER RSU-V sensors. View readings on the screen or download data to a laptop.

# IRROcloud SYSTEM

## IC-10 MONITOR FEATURES

**LTE-M Cellular Direct to Cloud:** No other device needed

**5+ Years Battery Life:** Upgraded Lithium Battery

**Simple Set-Up:** No configuration or calibration

**Install Anywhere:** No height or solar requirement

**Frost Alerts:** Sent via text message

## DATA PLATFORM FEATURES

**View or Download:** Sensor data in real-time from any mobile device or computer. API integration available.

**Quick View Dashboard:** Provides device and sensor status, location map, and adjustable threshold gauge panel.

**Graphing Suite:** For detailed analysis of soil moisture, irrigation events, rainfall, soil/air temperatures, flow, and device diagnostic data.



**IC-10 MONITOR** – All IC-10 Monitors include 1 free year of cloud service

CAT #	ITEM
IC-10	IRROcloud Sensor Monitor (without sensors) reads WATERMARKS .....
IC-10-IR	IRROcloud Sensor Monitor (without sensors) reads RSU-V IRROMETERS .....
IC-10-F	IRROcloud Sensor Monitor (without sensors). Reads most scaled pulse output low meters .....
IC-10-BASIC	IRROcloud Sensor Monitor Includes 3 Watermarks, 1 Soil Temp, 1 Pressure Switch .....
IC-10-PRO	IRROcloud Sensor Monitor Includes 6 Watermarks, 1 Soil Temp, 1 Pressure Switch .....

## IC-10 SENSOR OPTIONS

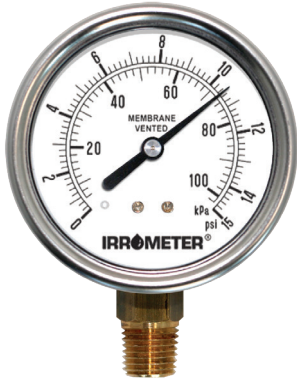
CAT #	ITEM
200TS	Soil Temperate Sensor .....
PPS-5	Preset Pressure Switch (5psi) .....
ATS	Air Temperature Station includes sensor, radiation shield, and mounting bracket .....
900RG	Rain Gauge - AeroCone® Design with mounting base and bird spikes .....
ISR	IRROcloud Service Annual Online Renewal .....

## IC-10 SENSOR OPTIONS

- WATERMARK Sensors
- IRROMETER RSU-V
- Soil Temperature Sensor
- Pressure Switch
- Flow Meter
- Air Temperature Station
- Rain Gauge



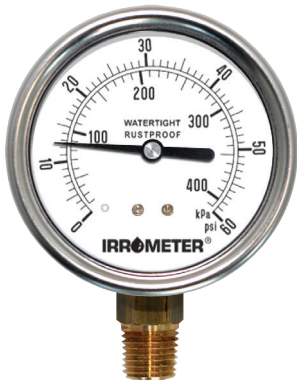
## PRESSURE GAUGES



### Membrane Vented Pressure Gauge –

(7MV series) Membrane vented pressure gauge allows for superior temperature and elevation related compensation while maintaining a dust proof and waterproof environment. This item has a 1.6% accuracy rating across the full scale of the gauge. Features a stainless steel case, with a durable 2½ in. (63mm) polycarbonate face. Connected with a ¼ in. brass standard pipe thread stem (NPT) and integral snubber. Dual scale P.S.I. and kPa faceplate.

GAUGE RANGE	MEMBRANE VENT	
psi/kPa	CAT#	
15 psi / 100 kPa	7MV-15†	
30 psi / 200 kPa	7MV-30†	
60 psi / 400 kPa	7MV-60†	
100 psi / 700 kPa	7MV-100†	
200 psi / 1400 kPa	7MV-200†	
400 psi / 2800 kPa	7MV-400†	



### Liquid Filled Pressure Gauge –

(7LF series) Glycerin filled for severe service conditions with pulsation and vibration. Features stainless steel case with a durable 2½ in. (63mm) polycarbonate face. Connected with a ¼ in. brass standard pipe thread stem (NPT) and integral snubber. Dual scale P.S.I. and kPa faceplate.

GAUGE RANGE	LIQUID FILLED	
psi/kPa	CAT#	
15 psi / 100 kPa	7MV-15†	
30 psi / 200 kPa	7MV-30†	
60 psi / 400 kPa	7LF-60†	
100 psi / 700 kPa	7LF-100†	
200 psi / 1400 kPa	7LF-200†	
400 psi / 2800 kPa	7LF-400†	

## LANDSCAPE AUTOMATION

The **WATERSWITCH** manages irrigation based on soil moisture status by overriding the irrigation controller operation when the soil becomes wetter than the moisture setting. The **WATERSWITCH** includes a weather resistant control module and one Watermark #200SS-5 sensor. Both AC and DC options available.



- Nine selectable moisture level settings
- Reads sensor and changes switch accordingly
- Status indicator light
- Timed bypass

### WATERSWITCH SELECTION CHART

CAT# DESCRIPTION	VALVE CONTROL		
	COMMON INTERRUPT		SENSOR CIRCUIT
CAT#	Single	Groups	ALL
WS-AC	✓	✓	✓
WS-DC			✓
WS-AC-T	✓	✓	✓

## INSTALLATION TOOLS



**Coring Tool Kit** – Nickel plated 7/8" (22 mm) soil coring tool. Comes as a kit in fabric storage pouch with two 12" (30 cm) extensions and handle for making up to a 36" (90 cm) access hole. Can also be used for soil sampling.  
Cat #1013.....



**Auger Tool Kit** – Nickel plated 1" (25 mm) soil auger. Makes oversize hole for grout style sensor installation in hard or rocky soils. Comes as a kit in fabric storage pouch with two 12" (30 cm) extensions and handle for making up to a 36" (90 cm) access hole.  
Cat #1014.....



**Extension Rod** – 12" (30 cm) extension rod for #1013 or #1014 to make deeper access holes.  
Cat #1015.....



### **WATERMARK Sensor Insertion Tool**

Tee handle style tool for inserting a WATERMARK Sensor up to 30" (76 cm) into a borehole created by one of the other tools shown in this section. It has an internal ejection rod inside the tube to push the sensor off of the tool once it's fully inserted into borehole.

Cat #1017.....



**Slide Hammer** – Steel slide hammer with 7/8" (22 mm) diameter x 48" (120 cm) long insertion tip, calibrated every 12" (30 cm). Top of tool is sliding hammer that drives tip into and back out of the ground, leaving a smooth borehole for sensor insertion. Cat #1012.....

## WEIGHT AND MEASUREMENT INFORMATION

### NET WEIGHTS

LENGTHS	6 INCH (15 CM)	12 INCH (30 CM)	18 INCH (45 CM)	24 INCH (60 CM)	36 INCH (90 CM)	48 INCH (120 CM)	60 INCH (150 CM)
IRROMETER	.844 lb. / .383 kg	.968 lb. / .439 kg	1.09 lb. / .496 kg	1.22 lb. / .553 kg	1.47 lb. / .666 kg	1.72 lb. / .780 kg	1.97 lb. / .893 kg
SSAT	.176 lb. / .080 kg	.254 lb. / .115 kg	.331 lb. / .150 kg	.408 lb. / .185 kg	.562 lb. / .255 kg	.717 lb. / .325 kg	.871 lb. / .395 kg

CAT #	DESCRIPTION	WEIGHT
200SS	WATERMARK Sensor 5' (1.5 m) .....	.157 lb. / .071 kg
30-KTCD-NL	WATERMARK Meter.....	.752 lb. / .341 kg
WS-AC and WS-DC	WATERSWITCH .....	.5 lb. / .226 kg
900M	WATERMARK Monitor .....	1.50 lb. / .680 kg
7 Series	Gauge .....	.375 lb. / .170 kg
IC-10	IRROcloud Sensor Monitor .....	2.00 lb / 1.00 kg
1001	Service Unit .....	1.07 lb. / .484 kg

CAT #	DESCRIPTION	WEIGHT
1002	Test Pump Service Unit.....	1.44 lb. / .654 kg
1004	IRROMETER Fluid.....	.187 lb. / .085 kg
1005	Monthly Chart (100).....	.28 lb. / .128 kg
1012	Slide Hammer.....	33.00 lb. / 14.97 kg
1013	Coring Tool Kit.....	3.00 lb. / 1.36 kg
1014	Auger Tool Kit.....	3.00 lb. / 1.36 kg
1017	WATERMARK Insertion Tool.....	3.00 lb. / 1.36 kg

PRICES EFFECTIVE JANUARY 1, 2026 – ALL PRODUCTS ARE MADE IN THE U.S.A., EXCEPT WHERE † INDICATED.

All prices F.O.B. Riverside, California, and apply to North America. (U.S. Dollars)

Terms: Cash, VISA, MasterCard with order or C.O.D.  
Net 30 days with previously established credit.  
Minimum \$7.50 order charge

Prices and specifications subject to change without notice.

EXPORT PACKING CHARGE: \$0.50 per IRROMETER

\$5.00 minimum per package.

(Applies only to shipments outside North America)



Shipping and Mailing Address:

1425 Palmyrita Avenue  
Riverside, California 92507-1600

Phone: (951) 682-9505

Email: sales@irrometer.com

Form #F-46 (10/25) #9

