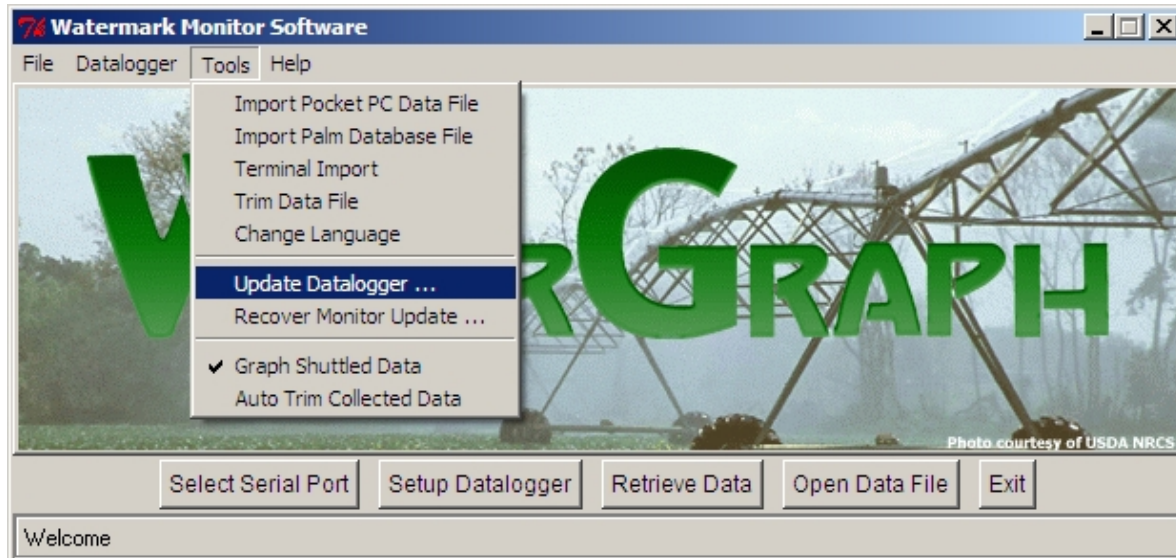


Instructions for updating the Watermark Monitor

New firmware may be available to update your Watermark Monitor. Please follow these instructions to update to the newest version of the operating firmware. It is recommended you download any data that may be in your Monitor before doing any upgrades to avoid possible loss of data. After uploading the firmware, the SETUP procedure should be performed.

Monitor firmware upgrading: You will need to download the new firmware and save it on your computer to be transferred to the Monitor's processor through the serial port connection.

- 1 Save the file "wm-log.HEX" to a location on your computer.
- 2 Connect your Monitor to the computer with the serial cable.
- 3 Open the WaterGraph software program. Use the most recent version that should accompany the firmware update you received.
- 4 Under the "Tools" pulldown menu, select "Update Datalogger"



- 5 Select the file you downloaded, "wm-log.HEX."
- 6 The upload should proceed automatically. The Monitor will display "Caution Uploading." You will see the data bits counting as it is uploading and when it stops the upload will be complete.
- 7 If a problem is encountered during uploading, the procedure may stop. If so, then select the "File" menu choice "Recover Monitor Update" and the procedure will restart. You will have to select "Yes" to confirm the choice and will be prompted to perform a "Reset" on the Monitor.

