

WIRELESS MONITOR

Automatically records sensor readings wirelessly

Save Time
Save Wire
Save Money
Save Labor
Installs Quickly
FCC License Free

Remotely Reads:

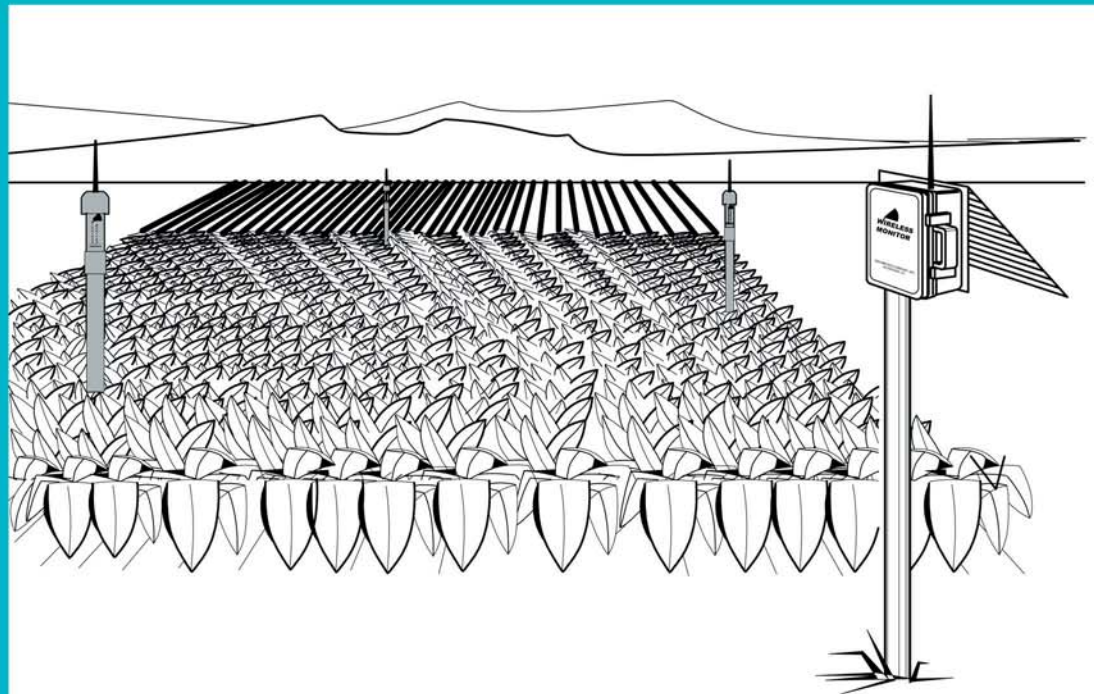
Watermark
Soil Moisture Sensors
Irrrometer Model RSU
Tensiometers
Temperature Sensors

Directly reads to receiver:

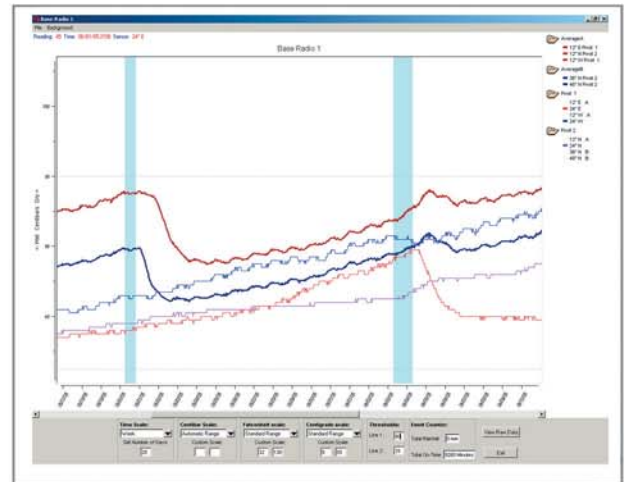
Switch Closure
Rain Gauge

Simple Field Installation –
Mounts on 2" pipe

Line-of-sight transmission
range is 1500 feet (457 m),
or more with extended
antenna height.



Graphed data shows trends of soil moisture, temperature, irrigation system operation or rainfall ... making scheduling decisions easier.



Unique design transmits only when the soil moisture has changed, thereby significantly reducing power consumption, extending battery life.



System consists of a receiver unit, that collects and records the readings, and multiple field transmitter units, that send sensor readings from the field locations.

Receiver is Model 950R and comes complete with solar recharging battery and operating/graphing software.

Transmitter is Model 950T and can be purchased with or without recommended sensor combinations. Each transmitter can read up to four sensors. Up to 16 transmitters can be used with a single receiver, allowing for a total of 64 sensors to be read per site.

Watermark soil moisture sensors, temperature sensors and Irrrometer Model RSU tensiometers can be read by the transmitters. The Receiver has the added capability of reading a directly wired switch closure or rain gauge for additional information in making irrigation decisions.

Switch closure shows duration of irrigation events. Rain Gauge shows hourly or daily accumulated rainfall.

Receiver display shows most recent records and battery status data. Accumulated data is easily downloaded for analysis.



Transmitter modules are preconfigured for specific sensor combinations. Choose from:

- 1 soil temperature and 3 Watermark soil moisture sensors.
- 4 Watermark soil moisture sensors.
- 4 Irrrometer Model RSU.

Transmitter easily mounts in the field on a piece of 2" IPS size pipe. Transmitter is housed inside a piece of PVC pipe with a coupling for easy installation onto pipe at the field location. Each field location is like a bollard sticking up above the plant canopy for maximum transmission range. This makes the field equipment easy to locate and very durable.

Optional Equipment -



950RG
Tipping bucket style rain gauge measures hourly or daily rainfall in inches or mm.



900M-CM
Cellular data modem for remote downloading of data from Receiver.



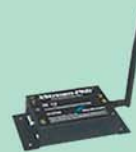
7-* /Switch/DC
Switching pressure gauge to show irrigation system operation.
* 15, 30, 60, 100, 200, or 400 psi



900M-BP
Solar recharging battery pack, provides power for long range telemetry radio, cellular modem and when using Model RSU.



900M-PDA
For downloading with a PDA device.



900M-BR
Base radio module for remote downloading of data from Receiver via license free 900MHz spread spectrum radio.



900M-FR
Field radio module for remote downloading of data from Receiver via license free 900MHz spread spectrum radio.

IRRROMETER CO.®

P.O. Box 2424, Riverside, CA 92516

PHONE (951) 689-1701 FAX (951) 689-3706

www.irrometer.com sales@irrometer.com