

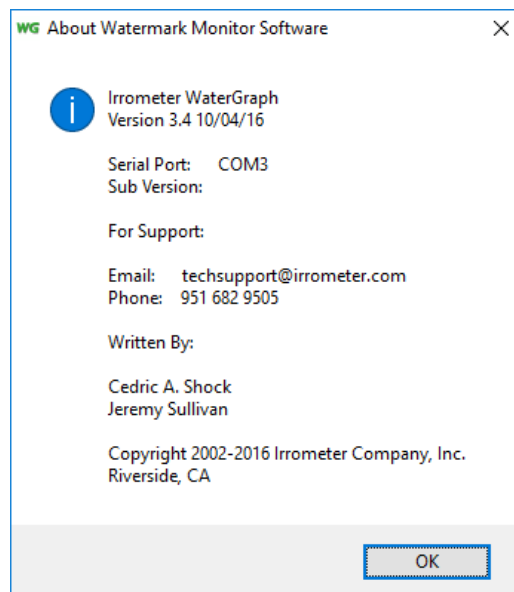
FIRMWARE UPGRADE for NEW V1.X Watermark Series 900M Monitors to V1.9

Instructions for updating the firmware version of the WATERMARK 900M DataLogger.
(IMPORTANT NOTE * New Monitors with Serial #'s greater than 20,000, need to be upgraded to Firmware Version 1.9. If your firmware is 1.1 - 1.6 please complete the following steps.)**

FIRST - download any data that is in the Monitor before proceeding.

1) Download and install, or have running, WaterGraph 3.4

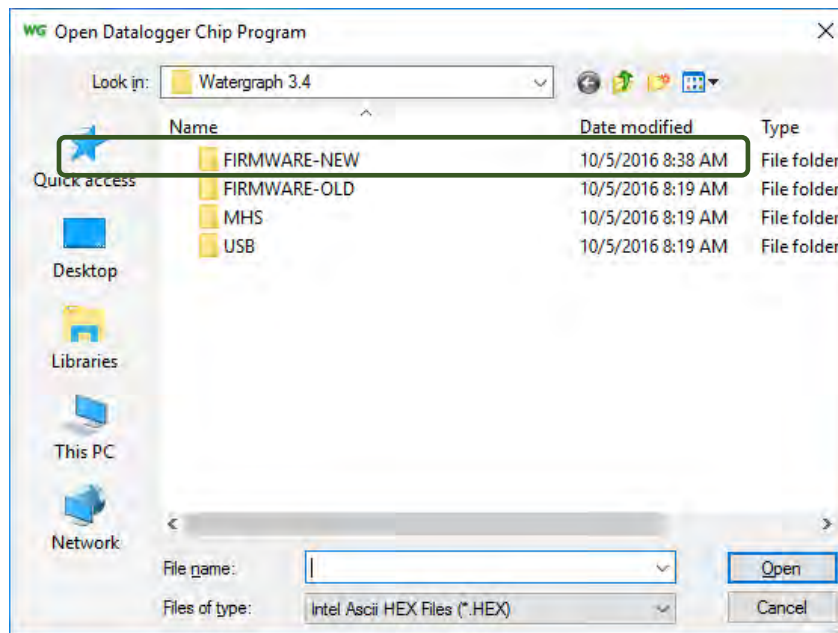
(WaterGraph Version 3.4 is dated 10/04/16 and will contain the LOGIII_1.8.HEX Firmware Upgrade File in its FIRMWARE-NEW Directory)



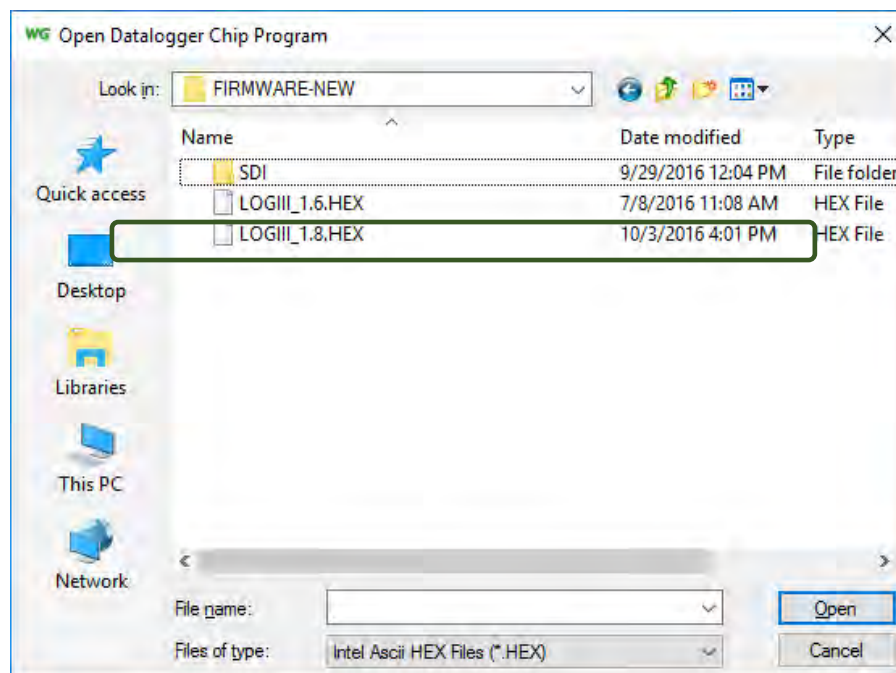
2) Open WaterGraph 3.4, choose **Tools**, then Select **Update Datalogger**



3) Once selected, another Window will appear on your screen as shown below. This will be to Open the Datalogger Chip Program.

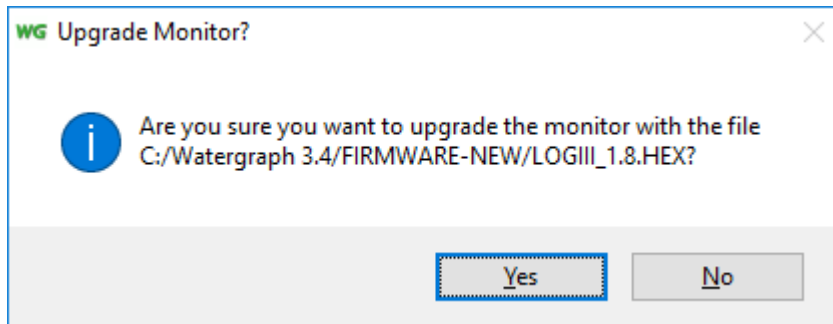


4) In this window, double click the FIRMWARE-NEW File Folder to open it up.



5) Select the **LOGIII_1.9.HEX** file and **LEFT Click it once** to write it onto the **File name** section of the window.

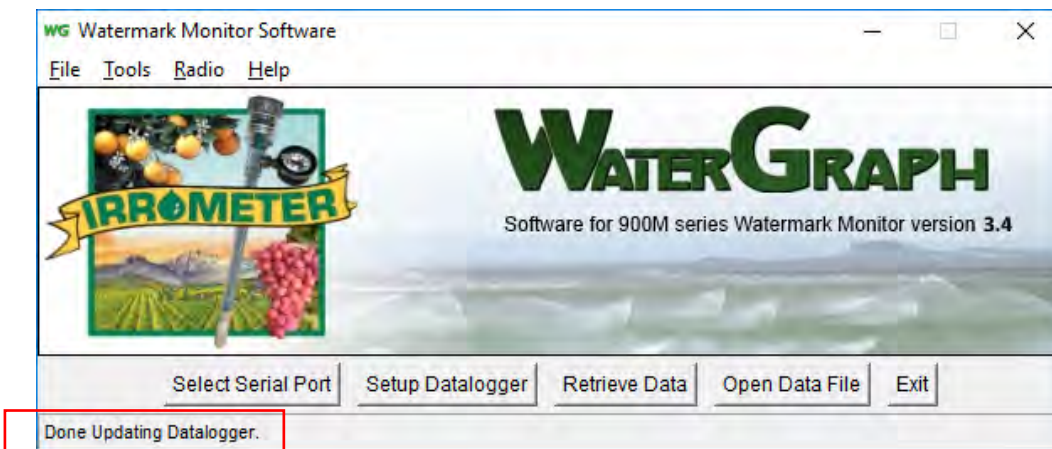
6) Select **Open** and you will see the following Window Alert!!



7) Select **YES**. The "Updating DataLogger" counter in the status bar at the bottom of the window will start and continue until it finishes updating.



8) When the DataLogger firmware has been fully updated the status bar will read "Done Updating Datalogger."



- 9) Although you have upgraded the Firmware, it is **Strongly Recommended** that you re-set and re-send the setup to the datalogger. In doing so you will make sure to re-Launch the Datalogger with the new Firmware version.

The screenshot shows the 'WG Datalogger Setup' window. The window title is 'WG Datalogger Setup' and it has a menu bar with 'File' and 'Datalogger'. The main configuration area includes:

- Datalogger name: 900M V2 Rev IP
- Read Interval: 5 Minutes (14 Days)
- Default Temperature: 076 F
- Sensor 1: Type: Temp (F), Name: Temp 1C
- Sensor 2: Type: Watermark, Name: W 12'
- Sensor 3: Type: Watermark, Name: W 24"
- Sensor 4: Type: Watermark, Name: W 36"
- Sensor 5: Type: Watermark, Name: W 48"
- Sensor 6: Type: Watermark, Name: WN 6 "
- Sensor 7: Type: Volts, Name: SR-RSU-V
- Sensor 8: Type: Volts, Name: LT-RSU-V

On the right side, there is a note: 'The Monitor's time will be set to the computer's internal clock'. Below this, the 'Starting Time' is set to 'Now'. The date is 10/11/2016 and the time is 1:21:00, with 'am' selected. At the bottom, there are three buttons: 'Retrieve datalogger setup', 'Cancel', and 'Send setup to datalogger'.

- 10) This process is complete once the set-up is re-sent to the datalogger and the logger is re-launched.