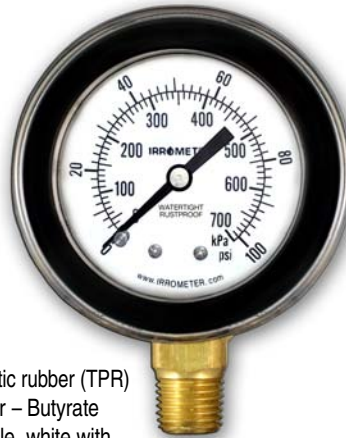




**Hermetically Sealed  
7 Series**

Hermetically sealed Pressure Gauges are water tight, dust proof, shock resistant, and have a shatterproof face.



**Specifications –**

- DIAL SIZE: 2 in. (50 mm) gauges only
- CASE: Hermetically sealed thermo plastic rubber (TPR)
- WINDOW: Inner – Polycarbonate, Outer – Butyrate
- DIAL: PSI outer scale & kPa inner circle, white with contrasting black markings
- ACCURACY: ± 3-2-3% of span ASME B40.1 Grade B
- MECHANISM: Bronze Bourdon tube
- CONNECTION: Standard 1/4 in. NPT – Brass bottom mount
- OPERATING TEMPERATURE: -40° to 150° F (-40° to 65° C), 32° to 150° F (0° to 65° C) for water service.

**NOTE:** Any gauge can be supplied with a snubber to protect against surge damage.

Available in six pressure ranges listed. Packed 24 to a carton (display carton available upon request).

Available private labeled with custom printed faces upon request (minimum applies).

**The IRROMETER Company has been a leading manufacturer of sealed pressure and vacuum gauges for over sixty years. We warrant these gauges to be water tight, dust proof and rust proof. Our gauges are built to give long and continuous service under conditions in which ordinary gauges would last only months.**

Gauge part numbering nomenclature for ordering:

**7 -100 -S**

7 Series Gauge

Pressure Range:

- 15 psi – (100 kPa)      100 psi – (700 kPa)
- 30 psi – (200 kPa)    200 psi – (1400 kPa)
- 60 psi – (400 kPa)    400 psi – (2800 kPa)

Snubber

w/Snubber = **-S**

For example a 100 psi gauge with a Snubber is 7-100-S

**SPECIFICATION INFO:** Gauge shall have brass connection with nylon gear, phosphorus bronze Bourdon tube, clear butyrate outer face and polycarbonate internal face with a thermo plastic rubber (TPR) cover.

**GAUGES**

**Liquid Filled  
7LF Series**

Glycerin filled Pressure Gauges feature stainless steel case with durable polycarbonate face. **For severe service conditions of pulsation and vibration.**



**Specifications –**

- DIAL SIZE: 2-1/2 in. (63mm) gauges only
- CASE: 304 Stainless Steel with EPDM vent plug
- WINDOW: Polycarbonate with EPDM gasket seal
- DIAL: PSI outer scale & kPa inner circle, white with contrasting black markings
- ACCURACY: ± 3-2-3% of span ASME B40.1 Grade B
- LIQUID FILL: Glycerin
- MECHANISM: Bronze Bourdon tube
- CONNECTION: Standard 1/4 in. NPT – Brass bottom mount
- OPERATING TEMPERATURE: -14° to 150° F (-25° to 65° C), 32° to 150° F (0° to 65° C) for water service.

**NOTE:** Any gauge can be supplied with a snubber to protect against surge damage.

Available in four pressure ranges listed. Packed 24 to a carton (display carton available upon request).

Available private labeled with custom printed faces upon request (minimum applies).

**Snubber –** Factory installed snubber improves gauge life by absorbing surges. Snubber is threaded for removal and cleaning if gauge becomes plugged with debris.

Gauge part numbering nomenclature for ordering:

**7LF -100 -S**

7LF Series Gauge

Pressure Range:

- 60 psi – (400 kPa)      200 psi – (1400 kPa)
- 100 psi – (700 kPa)    400 psi – (2800 kPa)

Snubber

w/Snubber = **-S**

For example a 100 psi gauge with a Snubber is 7LF-100-S.

**SPECIFICATION INFO:** Gauge shall be glycerin filled with brass connection with nylon gear, phosphorus bronze Bourdon tube, clear polycarbonate face with a stainless steel cover and EPDM vent plug.

# OUTPUT OPTIONS FOR 7 SERIES PRESSURE GAUGES

## Automatic Gauge

**OPTION A** is a pressure gauge with direct switching capabilities. Adjustable pressure selector switch may be set to any desired pressure. The switch will be closed past the setting to actuate connected device. Switch available for AC or DC power and also in Reverse switch action (open past the setting).

### Specifications –

**DIAL SIZE:** 2 in. (50 mm) gauges only

**CASE:** Hermetically sealed thermo plastic rubber (TPR)

**WINDOW:** Inner – Polycarbonate, Outer – Butyrate

**DIAL:** PSI outer scale & kPa inner circle, white with contrasting black markings

**ACCURACY:** ± 3-2-3% of span ASME B40.1 Grade B

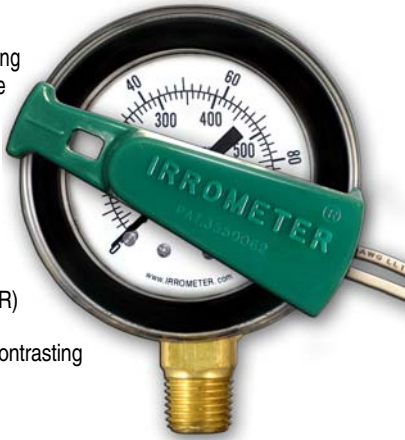
**MECHANISM:** Bronze Bourdon tube

**CONNECTION:** Standard 1/4 in. NPT – Brass bottom mount

**OPERATING TEMPERATURE:** -40° to 150° F (-40° to 65° C),  
32° to 150° F (0° to 65° C) for water service.

**ELECTRONIC CHARACTERISTICS:** Maximum 30 Volts, .1 amp DC, .4 amp AC  
Includes 16 in. (40 cm) AWG 18 cables.

**NOTE:** Any gauge can be supplied with a snubber to protect against surge damage.  
Available in six pressure ranges listed.



Gauge part numbering nomenclature for ordering:

**7 -100 -AAS -S**

7 Series Gauge

Pressure Range:

15 psi – (100 kPa)	100 psi – (700 kPa)
30 psi – (200 kPa)	200 psi – (1400 kPa)
60 psi – (400 kPa)	400 psi – (2800 kPa)

Output Options (choose only one):

w/AC switch closed past setting – <b>AAS</b>	w/DC switch closed past setting – <b>ADS</b>
w/AC switch open past setting – <b>AAR</b>	w/DC switch open past setting – <b>ADR</b>

Snubber

w/Snubber = **S**

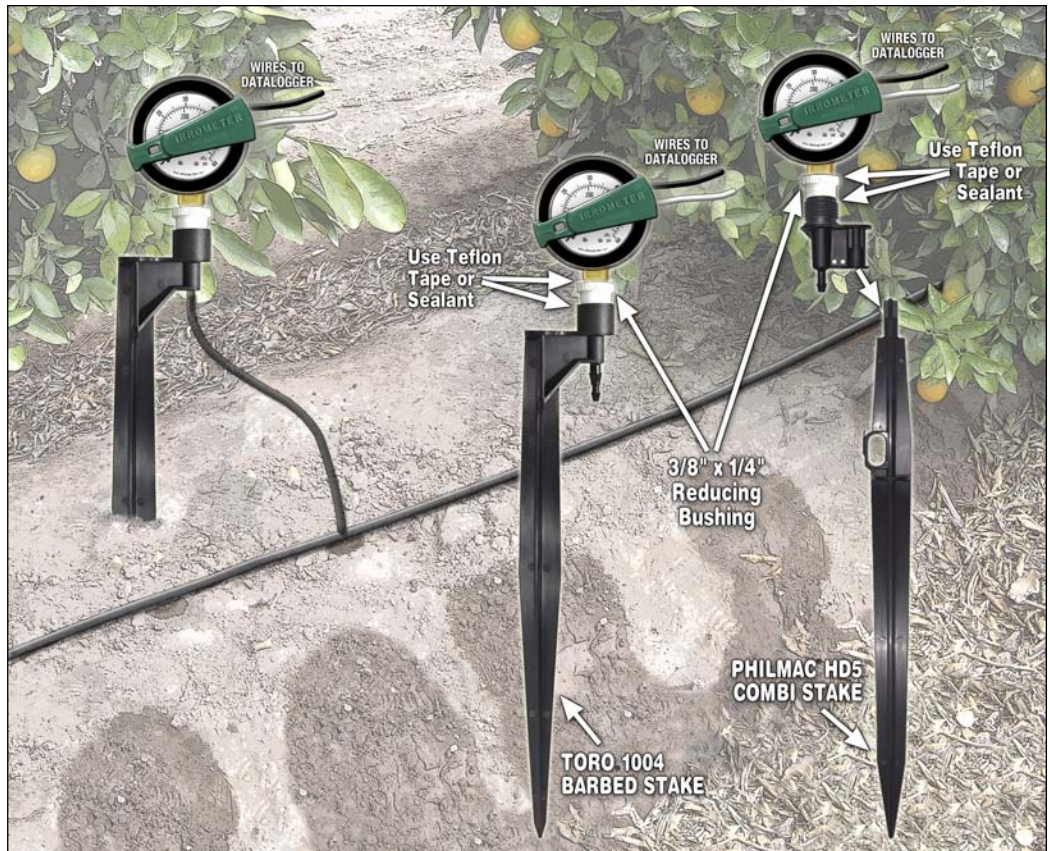
For example a 100 psi Auto gauge with a Snubber is 7-100-AAS-S

**SPECIFICATION INFO:** The Automatic Pressure Gauge shall read in pounds per square inch (P.S.I.) and kilopascals (kPa) of pressure and be hermetically sealed from moisture and dirt. Gauge face shall be visible for manual reading and contain an adjustable pressure selector switch. It shall be the Automatic Pressure Gauge as manufactured by The IRROMETER Company of Riverside, California.

GAUGES

## Pressure Gauge Applications

- Record duration of irrigation event
- Activate booster pump controls
- Validate system operation
- Validate pressure at different locations in piping system



**IRROMETER®**

**THE IRROMETER COMPANY, INC.**

1425 Palmyrita Ave., Riverside, CA 92507

(951) 682-9505 PHONE

(951) 682-9501 FAX

www.IRROMETER.com

sales@IRROMETER.com

These products are neither intended nor authorized for use as critical components (A critical component is one whose failure to function or perform may reasonably be expected to result, whether directly or indirectly, in the loss of the safety or effectiveness of the device or system containing it, and which must therefore meet very high standards of performance and reliability.) in any safety, life support, or other hazard related device or system (A hazard related device or system is one designed or intended for life support or maintenance of safety or for applications in medicine, aerospace, nuclear energy, or other fields, in which its failure to function or perform may reasonably be expected to result in loss of life or in significant injury or damage to person or property.), and IRROMETER assumes no responsibility for such use.



Bronze Member